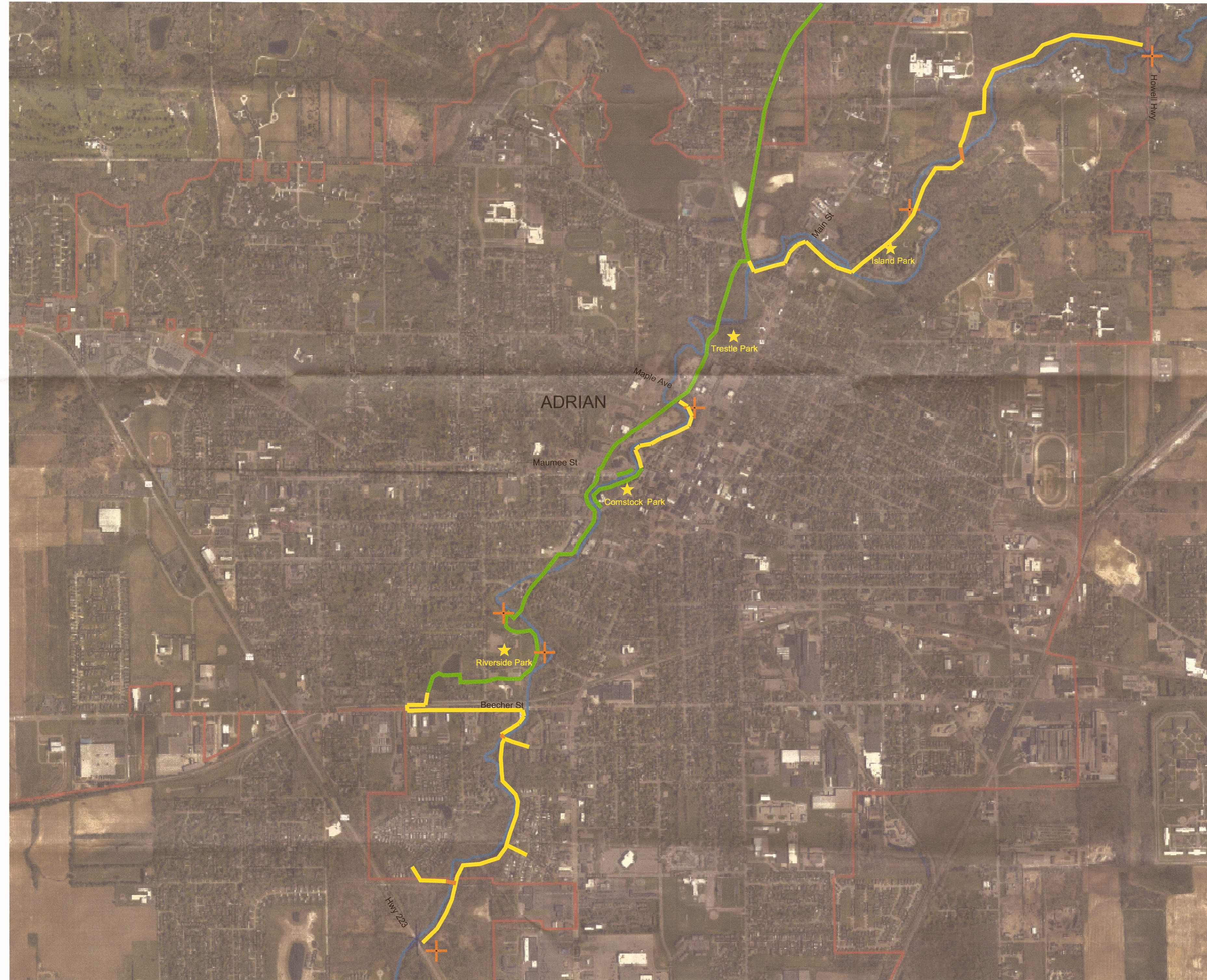








# SOUTH BRANCH RIVER RAISIN ENVIRONMENTAL INTERACTION STUDY

CITY OF ADRIAN, LENAWEE COUNTY, MICHIGAN

RIVER RAISIN WATERSHED COUNCIL



-  River Access Location
-  Parks
-  Existing Trail (Green)
-  Proposed Trail (Yellow)



SITE LOCATION MAP  
NO SCALE

NO.	REVISIONS	BY	DATE	Drawn By	DATE
				SAH	10-26-15
				Approved By	Date

4063 Grand Oak Drive  
Suite A109  
Lansing, MI 48911  
T: 517.887.1100  
F: 517.887.6335  
engdot.com



RIVER RAISIN WATERSHED COUNCIL  
South Branch River Raisin  
ENVIRONMENTAL INTERACTION STUDY  
CITY OF ADRIAN, LENAWEE COUNTY, MICHIGAN

PROJECT NO.  
**15063**

DRAWING

**1** OF **1**

T:\Autocad Drawings\15063\15063 environmental interaction study.dwg, 3/31/2016 7:42:32 AM, Canon ipf765 (temporary).pc3